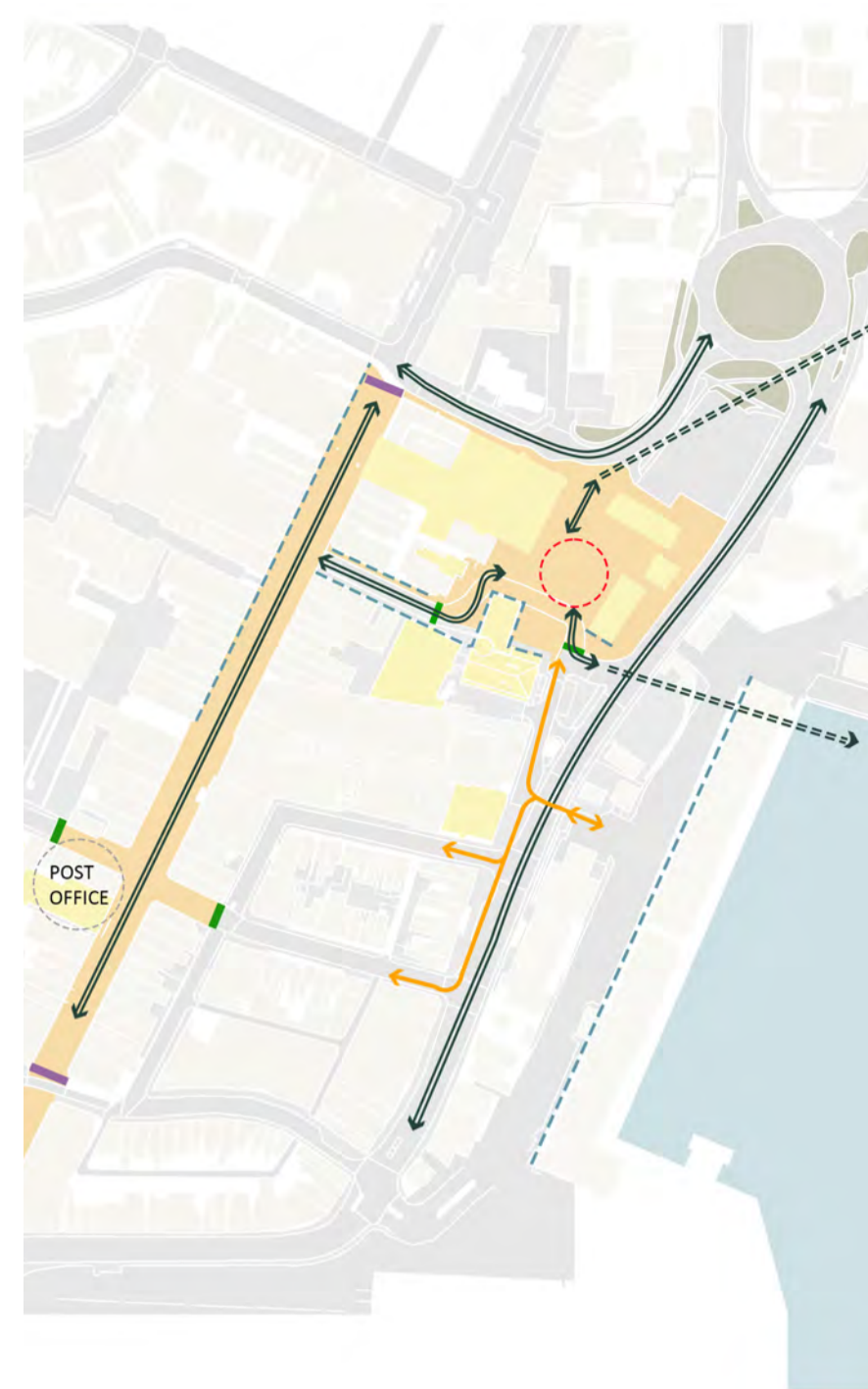


A refurbished Marina Centre will provide space for professional and creative industries to cluster and work together in one building. This will strengthen the opportunity for the creative businesses who require space for making, business start-ups and freelancers to closely work and network together. There is also the opportunity for space for outreach community work.

Within Lowestoft, an environment has been fostered in the nearby PowerPark, where there is significant provision of business space catering for the energy and renewables sector who positively cluster and network together. This is an opportunity to learn from this and provide a space for another sector to cluster with like mind businesses. requiring creative space that is not necessarily office space. The Marina Centre space is 525sqm (5,650 sqft) in size.



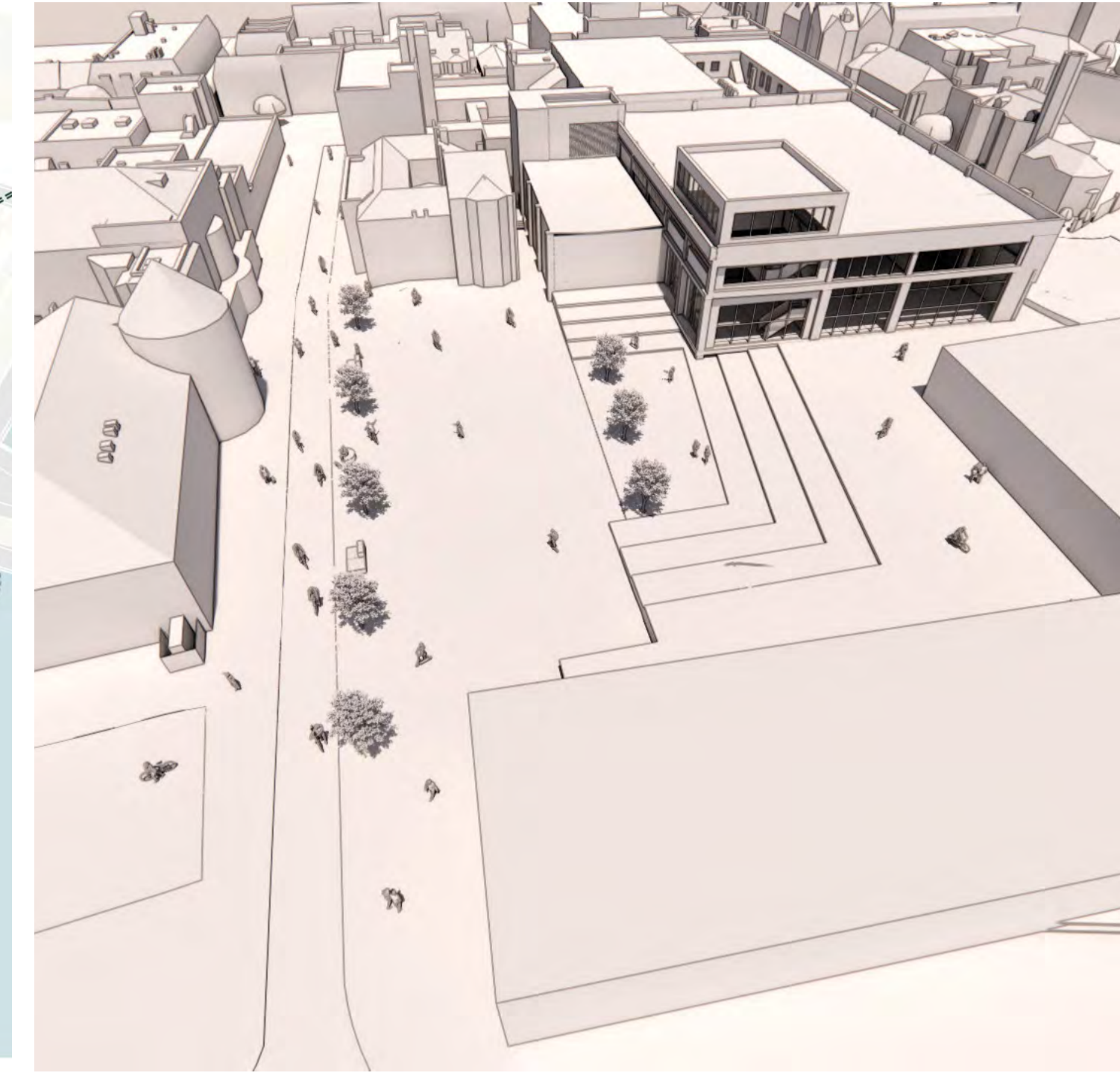
Retained Wing



Reduced Public Realm



Removed Wing



Enhanced Public Realm and Improved Access



Relationship between Marina Centre and new Community Hub Entrance



View from Civic Square