

**Architectural Identity**

A series of cellular forms inserted into the existing urban fabric and stitched together with an organic hub building re-establishing the original battery green park. Arranged around a civic square providing new facilities and visitor attractions that become a focal point for congregation.

Nature led approach – low carbon, circular materials with high levels of sustainability reflecting the local landscape. Aesthetic and fenestration developed responding to the levels of privacy required for the internal uses.

**Materiality**

Sleek, honest and contemporary exemplified by the quality of finishes, meticulous craft and thoughtful detailing. Natural material palette blending the sandy tones and natural textures of the Suffolk coastal landscape, creating warm, tactile and welcoming spaces inspiring culture and creativity.

Renewable, low carbon and natural materials creating warm and welcoming spaces. Characterised by a low embodied energy timber structure and finish. Building frame made from a mix of crosslaminated timber (CLT) and glue-laminated timber (glulam), two types of engineered wood

Generous floor to ceiling heights to create a feeling of light and space. Flexible interior, which not only allows it to accommodate different functions and activities, but also means the building could easily be adapted in the future if necessary.

**Exploring the Eastscape**

*“Lowestoft benefits from a great variety of landscape and seascape with big skies, beaches, the Broads, coastline and marshland. A calm escape, where you can hear the sound of the waves and watch the sun rise over the east coast, but it can equally be a lively dynamic social space and Battery Green aims to build on that.*

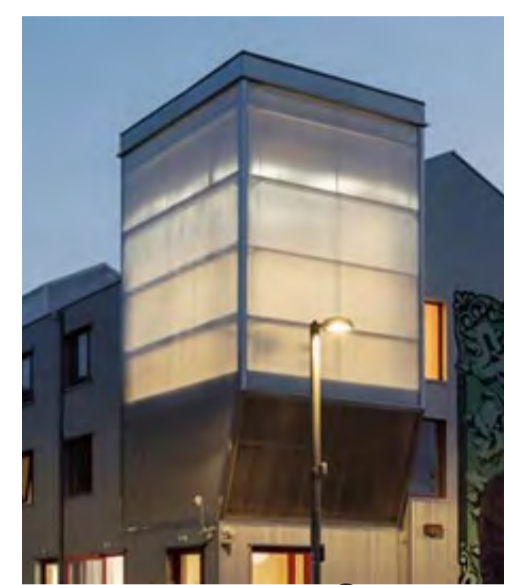
*(Chaplin Farrant)*



Marina Road Streetscape



Public Realm Streetscape



Polycarbonate preserving and showcasing the existing raw and brutalist car park structure whilst creating an illuminated beacon for Battery Green



Green roof with coastal wildflower seed, re-establishing battery green park and enhancing and fostering biodiversity in an urban environment



Glulam colonnade with green roof providing shelter and porosity into the building



Colourful metal clad form responding to the industrial port and energy park beyond



Recycled plastic sustainable cladding used to clad the walls and roof of the building demonstrating how waste can be transformed into beautiful products

